



## YUVIO TRACK

### TRACK LIGHTS

YUVIO is different: spotlights as modern design objects with a clear and recognizable shape. The luminaire head is square, flat and elegant with precise radii at the edges. And with a special technology for directing the light that stands out visibly: YUVIO works with freeform lenses, combining the advantages of reflector and lens technology in a striking aesthetic.



#### Unique freeform lenses

Striking appearance, optimum precision and glare control



#### Universal application

In retail and beyond, for example for offices, hotels, restaurants or exhibitions



#### Horizontal and vertical

Accentuating, modeling or planar. The choice of light distributions guarantees creative freedom



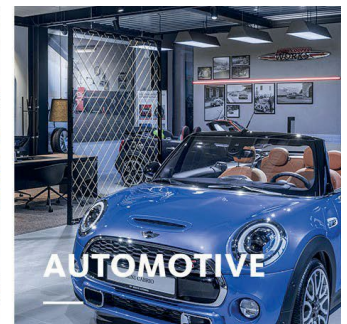
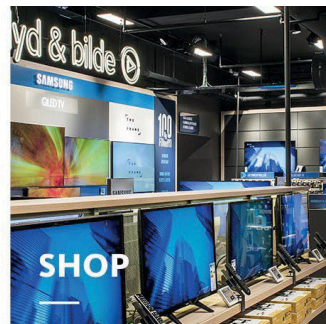
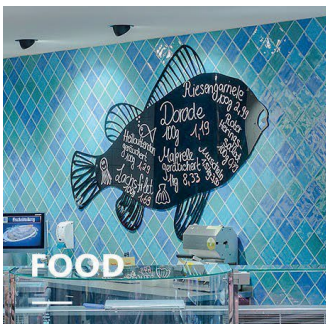
#### Light colours also available in CRI > 90

Authentic lighting with Brilliant Colour, Brilliant Food, Efficient White or Efficient Cool, among others






#### Intelligent light

LED<sup>IQ</sup> for your smart lighting management; controls from switchable, DALI, Bluetooth to BLE



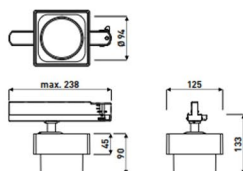
## YUVIO TRACK

[www.oktalite.com/yuvio-track](http://www.oktalite.com/yuvio-track)

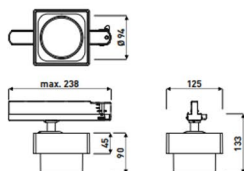
Luminaire type	Track lights
Application areas	Gondola heads, high decorations, product carriers, back panels, graphics
Range of action	355° rotatable and 0-110° tiltable
Fastening	3P conductor rail, not suitable for vertical mounting
Lighting technology	LED, LED IQ DALI, LED IQ BLE
Beam angel	Super Spot, Spot, Medium Flood, Flood, Oval
LED luminous flux class	1500 lm - 5000 lm
Light colour CRI 80	2700 K, 3000 K, 3500 K, 4000 K
Light colour CRI 90	3100 K - Brilliant Colour, 3200 K - Efficient White, 4000 K - Efficient Cool
Light colour Food	2700 K - Brilliant Food, Meat, Meat + Fish
Supply unit	Integrated driver
Luminaire colour	RAL 9005 jet black RAL 9006 white aluminum RAL 9016 traffic white Special colours on request
Surface	structure powder-coated
Nominal voltage	220 - 240 V, 50/60Hz
Weight	approx. 1.5 kg
Test mark	  



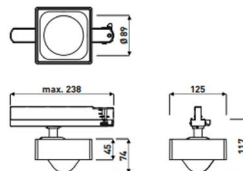
Super Spot



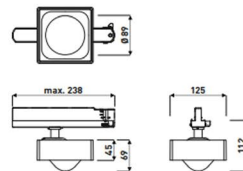
Spot



Medium Flood



Flood



Oval

